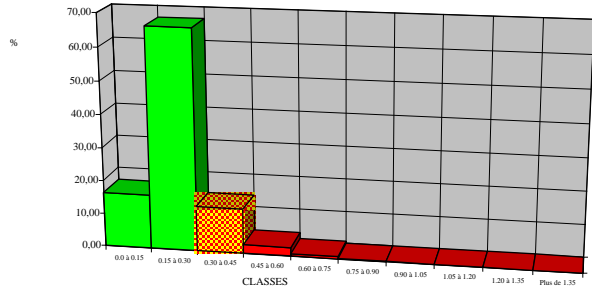


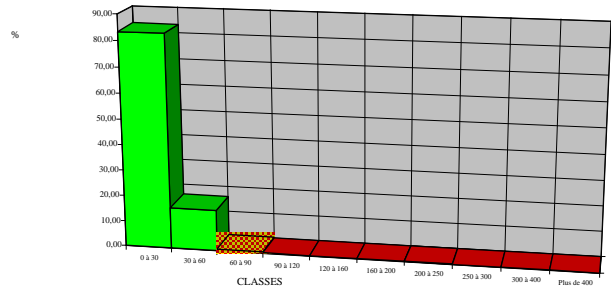
**Sels Solubles**

Moyenne = 0,23



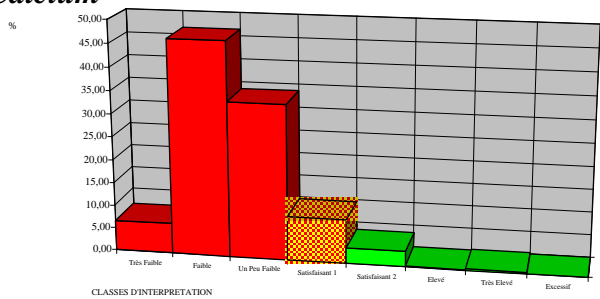
**Sodium**

Moyenne = 32 ppm Na2O



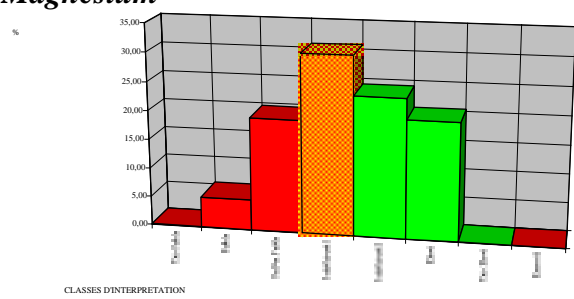
**Calcium**

Moyenne = 1640 ppm CaO



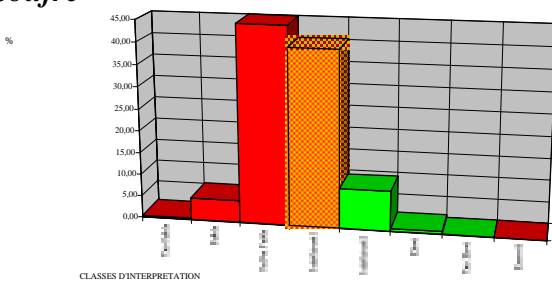
**Magnésium**

Moyenne = 143 ppm MgO



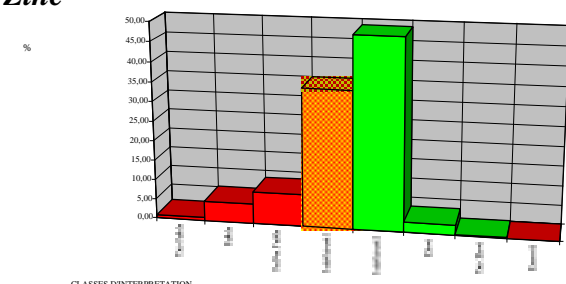
**Soufre**

Moyenne = 24 ppm SO3



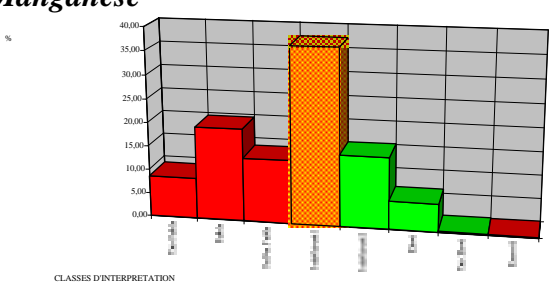
**Zinc**

Moyenne = 2,5 ppm Zn



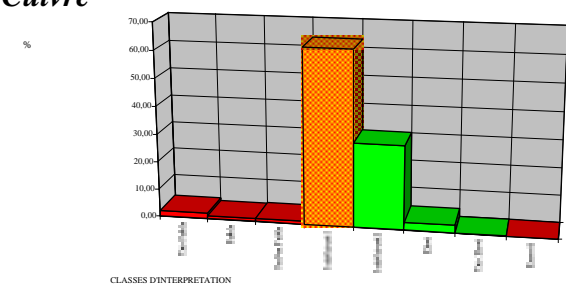
**Manganèse**

Moyenne = 7,9 ppm Mn



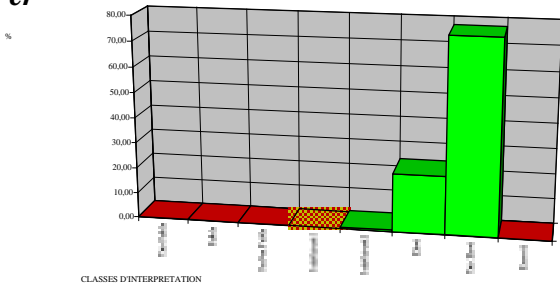
**Cuivre**

Moyenne = 2,3 ppm Cu



**Fer**

Moyenne = 110 ppm Fe



**Bore**

Moyenne = 0,51 ppm B

